

Friday Harbor Power Squadron – Pocket Cruise

All hands on deck for the May monthly Meeting and Picnic at
Seattle Yacht Club Outstation - Henry Island - May 9th

Here's what we are going to do . . .

- ❖ Ride together on several large boats from Roche Harbor Marina to Seattle Yacht Club, Henry Island Outstation
- ❖ Gather at the Roche Harbor Resort on the grass outside the Lime Kiln Cafe at 1130 a.m. You will receive your boat assignment for the ride over and back at this time
- ❖ Pack your own picnic. You will be boarding someone else's boat, so be considerate in packing your picnic (minimize your "take aboard").
- ❖ There is a fire pit as well as 2 propane grills for barbecuing.
- ❖

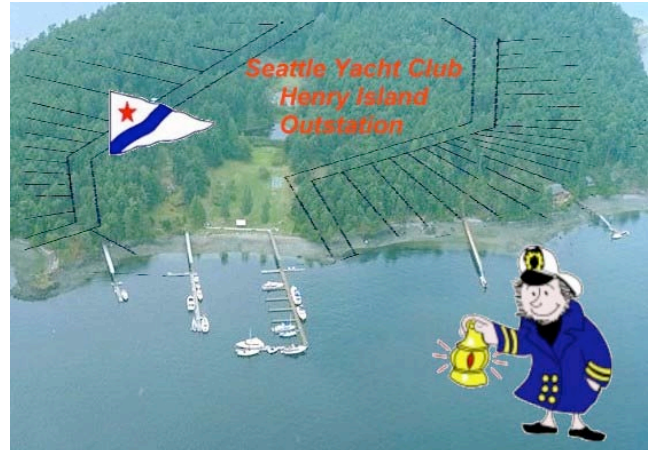
Please bring your own:

- ❖ Entree to BBQ
- ❖ Favorite beverage
- ❖ Dinnerware
- ❖ **Personal Flotation Device (PFD)** if you have one

Note: We must pack out what we pack in. Black "contractor bags" will be provided.

Return your **clip and mail** no later than **April 15**. Boat assignments will be on a first come first served basis.

See next page for form and more information.



Some Rules/Restrictions apply

- ❖ **Only Power Squadron boats flying Seattle Yacht Club burgees with an SYC member onboard may tie up to the dock.** These boats will be pre-assigned with SYC members aboard by Dave Cable.
- ❖ We are looking for 5 Power Squadron Members who have boats large enough to accommodate, aboard, at least 10 Power Squadron participants (approximately 13 people, including the SYC member, Captain and Mate) for the short ride over.
- ❖ Those wishing to take their own boats may anchor out and dinghy in.
- ❖ Participating boats **must be prearranged** with Dave Cable by April 24.

Clip-n-Mail Reservation Form

RSVP NO LATER THAN April 15

Names of Squadron Members and Guests

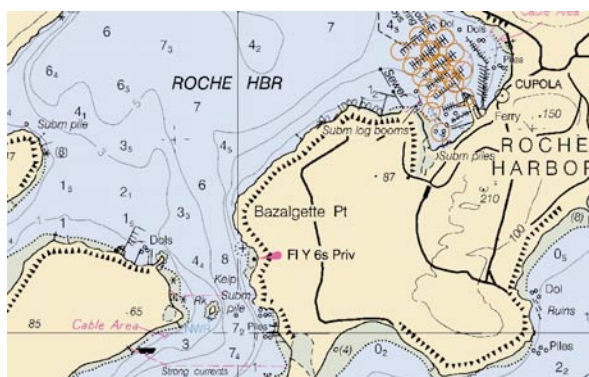
FHPS May 9, 2009 Picnic Meeting at
Seattle Yacht Club Outstation - Henry
Island

_____ I am willing to transport 10 members/guests on my boat in addition to an SYC member

Name of Boat _____ boat length _____

Mail to: Dave Cable
173 Golf Course Road
Friday Harbor, WA 98250

Or, email to janeable@rockisland.com



Seattle Yacht Club - Henry Island Outstation

48° 36.2' North Latitude - 123° 10.2' West Longitude

One of Seattle Yacht Club's outstations in the San Juan Islands is located in Roche Harbor, just west of the point where Mosquito Pass enters the Harbor. Look for a tall flagpole on shore with a large red brick house behind it. At low tide, there is ten feet of water at the outer end of the floats with about six feet at the mid point. Fingers are installed on the west float and provide additional moorage in five to ten feet of water. Thirty-ampere electrical service is available on the main floats. Depending upon the presence of SYC boats (if any), we will plan to use the docks at the north end, furthest from shore.

Captains should be aware that on a flood tide, the current at the SYC floats is

negligible; however, on an ebb tide the current can reach 3 knots from West to East. The upper two floors of the brick house are the residence of the Outstation managers, Dick and Marcia Plows. Please be courteous to them, as they work hard to keep the Outstation, ship shape. Toilets and washroom facilities are available on the lower floor.

Deer abound on the island, and there is an enjoyable half-hour botanical trail - ideal for a nature walk.

Situated ashore between the docks is a small brick building containing an ice machine. Also there are two propane grills and a fire pit, located on the beach for barbequing and a bonfire.